

Chimney Caps

Stainless Steel and Black Galvanized



The Chim-A-Lator® line of Chimney Caps easily mounts to the top of a masonry fireplace with a simple screwdriver. They are available in both stainless steel and galvanized metal powder coated black with over 50 stock sizes to save you both time and money.

BDM[®]
CHIMNEY CAPS

Features

Top quality heavy gauge welded construction. Our premium stainless steel caps are made of 100% type 304 stainless steel for lifetime protection against rust and corrosion.

The galvanized cap is constructed of flat expanded galvanized metal screen and an 18 gauge frame, powder-coated with a protective, flat black finish to assure long lasting beauty.

Lifetime warranty. Our stainless models come with a lifetime warranty against rust and manufacturers defects. Galvanized models come with a 5 year warranty against rust through.

We stock over 50 sizes to fit all clay flue tiles – square, rectangle, oval, and round. This saves you time and money.

5/8" expanded metal available. California or local code requirements may require 5/8" screen.

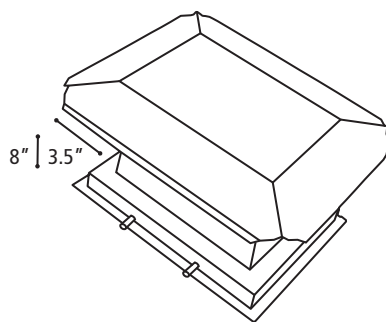
Easily installed. Four or more screws secure cap to flue. 1/8" thick weld nuts are welded to the frame so screws do not strip out and go in straight. A screwdriver is all you need.

Our caps are a full 8" in height. This minimizes flue restriction which may cause back smoking.

Ordering

Measure OUTSIDE of Flue Tile. Use chart to order proper size. Each size chimney cap has 2.25 inches of adjustment.

Measure height of flue tile extending out of chimney. If this measurement is less than 1.25 inches, you will need a flue extension (see page 8 for flue extensions).

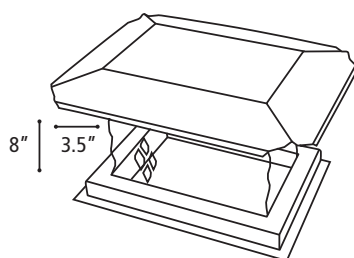


Stainless Steel Stackable Chimney Cap

Use Outside Dimensions

Flue Size	Width (from - to)	Length (from - to)	Order #
8"x8"	7" - 9.25"	7" - 9.25"	460808
8"x13"	7" - 9.25"	11" - 13.5"	460813
12"x12"	10" - 12.25"	10" - 12.25"	461212
13"x13"	11" - 13.5"	11" - 13.5"	461313

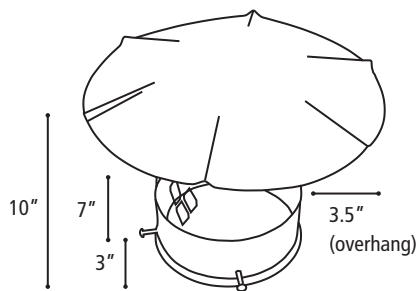
Note:
 7" minimum required between flue tiles (overhang is 3.5")
 Stackable chimney caps must be ordered in six packs.
 Meets 5/8" California requirements.



Stainless Steel Chimney Cap – Square

Use Outside Dimensions			3/4" Mesh	5/8" Mesh
Flue Size	Width (from - to)	Length (from - to)	Order #	Order #
5"x8"	4" - 6.25"	7" - 9.25"	430508	–
8"x8"	7" - 9.25"	7" - 9.25"	430808	400808
8"x13"	7" - 9.25"	11" - 13.5"	430813	400813
8"x18"	7" - 9.25"	16" - 18.25"	430818	400818
12"x12"	10" - 12.25"	10" - 12.25"	431212	401212
13"x13"	11" - 13.5"	11" - 13.5"	431313	401313
12"x16"	10" - 12.25"	14" - 16.25"	431216	401216
13"x18"	11" - 13.5"	16" - 18.25"	431318	401318
16"x16"	14" - 16.25"	14" - 16.25"	431616	401616
16"x20"	14" - 16.25"	18" - 20.25"	431620	401620
18"x18"	16" - 18.25"	16" - 18.25"	431818	401818
20"x20"	18" - 20.25"	18" - 20.25"	432020	402020
20"x24"	18" - 20.25"	22" - 24.25"	432024	402024
24"x24"	22" - 24.25"	22" - 24.25"	432424	402424

Note:
 7" minimum required between flue tiles (overhang is 3.5")
 Black powder coating stainless steel caps (#499998)
 Leg kits (#390004)



Note:
Black powder coating stainless steel caps (#499998)
Leg kits (#390004)

Stainless Steel Chimney Cap – Round

Use Outside Dimensions		3/4" Mesh	5/8" Mesh
Flue Size	Tile OD (From - to)	Order #	Order #
6"	6.125" - 7"	440006	410006
7"	7.125" - 8"	440007	410007
8"	8.125" - 9"	440008	410008
9"	9.125" - 10"	440009	410009
10"	10.125" - 11"	440010	410010
11"	11.125" - 12"	440011	410011
12"	12.125" - 13"	440012	410012
13"	13.125" - 14"	440013	410013
14"	14.125" - 15"	440014	410014
15"	15.125" - 16"	440015	410015
16"	16.125" - 17"	440016	410016
17"	17.125" - 18"	440017	410017
18"	18.125" - 19"	440018	410018



Note:
Black powder coating stainless steel caps (#499998)
Leg Kits (#390004)
Available only in 5/8" mesh
Angles are welded on bottom for oval flues.

Stainless Steel California Chimney Cap

Use Outside Dimensions			
Flue Size	Width (from - to)	Length (from - to)	Order #
8"x8"	7" - 9.25"	7" - 9.25"	420808
8"x13"	7" - 9.25"	11" - 13.5"	420813
8"x18"	7" - 9.25"	16" - 18.25"	420818
12"x12"	10" - 12.25"	10" - 12.25"	421212
13"x13"	11" - 13.5"	11" - 13.5"	421313
12"x16"	10" - 12.25"	14" - 16.25"	421216
13"x18"	11" - 13.5"	16" - 18.25"	421318
16"x16"	14" - 16.25"	14" - 16.25"	421616
16"x20"	14" - 16.25"	18" - 20.25"	421620
18"x18"	16" - 18.25"	16" - 18.25"	421818
20"x20"	18" - 20.25"	18" - 20.25"	422020
20"x24"	18" - 20.25"	22" - 24.25"	422024
24"x24"	22" - 24.25"	22" - 24.25"	422424

Stainless Steel Spark Arrestor

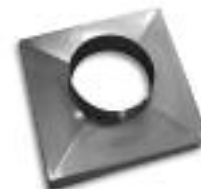
Use Outside Dimensions			3/4" Mesh	5/8" Mesh
Flue Size	Width (from - to)	Length (from - to)	Order #	Order #
8"x8"	7" - 9.25"	7" - 9.25"	480808	450808
8"x13"	7" - 9.25"	11" - 13.5"	480813	450813
8"x18"	7" - 9.25"	16" - 18.25"	480818	450818
12"x12"	10" - 12.25"	10" - 12.25"	481212	451212
13"x13"	11" - 13.5"	11" - 13.5"	481313	451313
12"x16"	10" - 12.25"	14" - 16.25"	481216	451216
13"x18"	11" - 13.5"	16" - 18.25"	481318	451318
16"x16"	14" - 16.25"	14" - 16.25"	481616	451616
16"x20"	14" - 16.25"	18" - 20.25"	481620	451620
18"x18"	16" - 18.25"	16" - 18.25"	481818	451818
20"x20"	18" - 20.25"	18" - 20.25"	482020	452020
20"x24"	18" - 20.25"	22" - 24.25"	482024	452024
24"x24"	22" - 24.25"	22" - 24.25"	482424	452424

Chase Top Covers

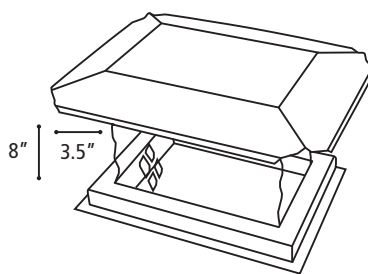
New! Custom Chase Tops available. Choose between stainless steel or galvanized. When calling for you custom chase cover quote tell us the dimensions of the cover as well as the size and location of the hole(s). We'll be happy to assist you with any configuration chase top cover you desire.



Note:
Black powder coating stainless steel caps (#499998)
Leg kits (#390004)



Chase Top #689991



Note:
7" minimum required between
flue tiles (overhang is 3.5")

Leg kits #390004

Black Galvanized Steel Chimney Cap – Square

Use Outside Dimensions			3/4" Mesh	5/8" Mesh
Flue Size	Width (from - to)	Length (from - to)	Order #	Order #
8"x8"	7" - 9.25"	7" - 9.25"	330808	300808
8"x13"	7" - 9.25"	11" - 13.5"	330813	300813
8"x18"	7" - 9.25"	16" - 18.25"	330818	300818
12"x12"	10" - 12.25"	10" - 12.25"	331212	301212
13"x13"	11" - 13.5"	11" - 13.5"	331313	301313
12"x16"	10" - 12.25"	14" - 16.25"	331216	301216
13"x18"	11" - 13.5"	16" - 18.25"	331318	301318
16"x16"	14" - 16.25"	14" - 16.25"	331616	301616
16"x20"	14" - 16.25"	18" - 20.25"	331620	301620
18"x18"	16" - 18.25"	16" - 18.25"	331818	301818
20"x20"	18" - 20.25"	18" - 20.25"	332020	302020
20"x24"	18" - 20.25"	22" - 24.25"	332024	302024
24"x24"	22" - 24.25"	22" - 24.25"	332424	302424



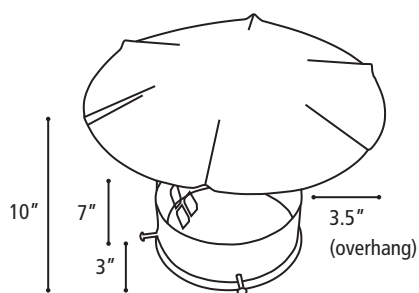
Note:
Leg Kits #390004

Available only in 5/8" mesh

Angles are welded on bottom for
oval flues.

Black Galvanized Steel California Chimney Cap

Use Outside Dimensions			
Flue Size	Width (from - to)	Length (from - to)	Order #
8"x8"	7" - 9.25"	7" - 9.25"	320808
8"x13"	7" - 9.25"	11" - 13.5"	320813
8"x18"	7" - 9.25"	16" - 18.25"	320818
8"x20"	10" - 12.25"	10" - 12.25"	320820
10"x18"	11" - 13.5"	11" - 13.5"	321018
13"x13"	10" - 12.25"	14" - 16.25"	321313
13"x18"	11" - 13.5"	16" - 18.25"	321318
13"x21"	14" - 16.25"	14" - 16.25"	321321
16"x20"	14" - 16.25"	18" - 20.25"	321620
17"x21"	16" - 18.25"	16" - 18.25"	321721
18"x18"	18" - 20.25"	18" - 20.25"	321818
20"x24"	18" - 20.25"	22" - 24.25"	322024
24"x24"	22" - 24.25"	22" - 24.25"	322424



Black Galvanized Steel Chimney Cap – Round

Use Outside Dimensions		3/4" Mesh	5/8" Mesh
Flue Size	Tile OD (from - to)	Order #	Order #
6"	6.125" - 7"	340006	310006
7"	7.125" - 8"	340007	310007
8"	8.125" - 9"	340008	310008
9"	9.125" - 10"	340009	310009
10"	10.125" - 11"	340010	310010
11"	11.125" - 12"	340011	310011
12"	12.125" - 13"	340012	310012
13"	13.125" - 14"	340013	310013
14"	14.125" - 15"	340014	310014
15"	15.125" - 16"	340015	310015
16"	16.125" - 17"	340016	310016
17"	17.125" - 18"	340017	310017
18"	18.125" - 19"	340018	310018

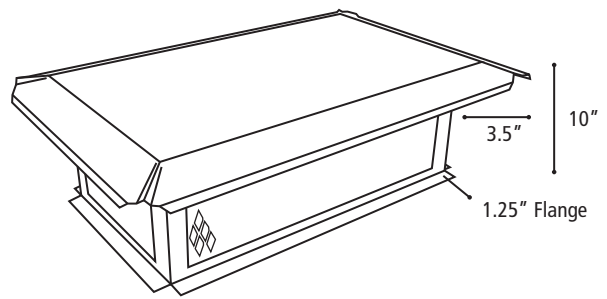
Note:
Leg kits #390004

Black Galvanized Spark Arrestor

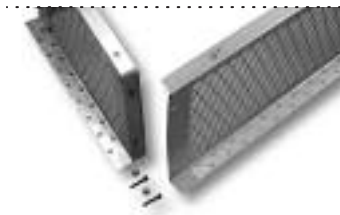
Use Outside Dimensions			3/4" Mesh	5/8" Mesh
Flue Size	Width (from - to)	Length (from - to)	Order #	Order #
8"x8"	7" - 9.25"	7" - 9.25"	380808	350808
8"x13"	7" - 9.25"	11" - 13.5"	380813	350813
8"x18"	7" - 9.25"	16" - 18.25"	380818	350818
12"x12"	10" - 12.25"	10" - 12.25"	381212	351212
13"x13"	11" - 13.5"	11" - 13.5"	381313	351313
12"x16"	10" - 12.25"	14" - 16.25"	381216	351216
13"x18"	11" - 13.5"	16" - 18.25"	381318	351318
16"x16"	14" - 16.25"	14" - 16.25"	381616	351616
16"x20"	14" - 16.25"	18" - 20.25"	381620	351620
18"x18"	16" - 18.25"	16" - 18.25"	381818	351818
20"x20"	18" - 20.25"	18" - 20.25"	382020	352020
20"x24"	18" - 20.25"	22" - 24.25"	382024	352024
24"x24"	22" - 24.25"	22" - 24.25"	382424	352424



Note:
Leg kits #390004



Note:
 7" minimum required between tallest flue tiles (3.5" overhang)
 Order by screen dimensions.
 Flange = 1.25" wide
 Powder coat crown mount cap black: #490000
 Fastened by tapcon screws.
 Use for multiple flue installation.
 Order standard caps and save 15% to 20%
 All standard crown mount caps are 10" high



Note:
 Bolt together corners on knocked down caps for added strength

Stainless Steel Crown Mounted Cap

Screen Size	Order #	Cover Size
One Piece Assembled Caps		
14"x14"	491414	12"x23"
17"x17"	491717	23"x23"
Knocked Down Caps		
14"x19"	491419	20"x29"
14"x21"	491421	20"x29"
14"x23"	491423	20"x29"
14"x25"	491425	20"x35"
14"x27"	491427	20"x35"
14"x29"	491429	20"x35"
14"x31"	491431	20"x41"
14"x33"	491433	20"x41"
14"x35"	491435	20"x41"
14"x37"	491437	20"x47"
14"x39"	491439	20"x47"
14"x41"	491441	20"x47"
17"x25"	491725	23"x35"
17"x27"	491727	23"x35"
17"x29"	491729	23"x35"
17"x31"	491731	23"x41"
17"x33"	491733	23"x41"
17"x35"	491735	23"x41"
17"x37"	491737	23"x47"
17"x39"	491739	23"x47"
17"x41"	491741	23"x47"

Stainless Steel Custom Mount Cap

	Crown Mount	Perimeter Mount
Flue Size	Order #	Order #
10" High	499910	4999210
12" High	499912	4999212
14" High	499914	4999214
16" High	499916	4999216