

# Light Stainless Flexible Liner



Stainless Steel (Type 316L, .006 Thickness)

“Dalsin Line”® light flexible liner is listed for chimney relining and is suitable for wood, pellet, gas, oil, and coal applications. This liner is manufactured using .006” thick Type 316L stainless steel and backed by a limited lifetime warranty. All components are made from Type 316L stainless steel and are designed for quick and easy installation.



## Features

UL listed to UL 1777

Limited lifetime warranty – must have a rain cap and be swept annually by a certified sweep.

Light flex is corrugated 316L stainless steel

Larger sizes are available. Call for quote.

Custom ovalizing available –

Fittings for oval flex carry a 50% cost premium over round fittings.

## Ordering

Kits available in 15', 18', 20', 25', 30' and 35' lengths

6" x 25' kits and under ship via UPS ground

7" x 25' kits and up ship via freight truck

Kits with substitutions will require additional processing time.

Flex only available in standard lengths of 25', 35', and 50' as well as custom per foot lengths.

Oval flex ships straight via freight truck

(Six) 6" x 25' kits to 1 pallet

(Four) 8" x 25' kits to 1 pallet

Insulation wrap is required on any unlined chimney (Refer to installation instructions).

To substitute the Screened Flex Rain Cap shown on p.47 in a kit simply add the letters "SC" to the end of the kit Order Number.



**Stainless Steel Flex Connector Kit (Type 316L)**

Size	Order #	Order #
	<b>15 Foot</b>	<b>18 Foot</b>
3" diameter	98500315	98500318
4" diameter	98500415	98500418
5" diameter	98500515	98500518
5.5" diameter	985005515	985005518
6" diameter	98500615	98500618
7" diameter	98500715	98500718
8" diameter	98500815	98500818
	<b>20 Foot</b>	<b>25 Foot</b>
3" diameter	98500320	98500325
4" diameter	98500420	98500425
5" diameter	98500520	98500525
5.5" diameter	985005520	985005525
6" diameter	98500620	98500625
7" diameter	98500720	98500725
8" diameter	98500820	98500825
	<b>30 Foot</b>	<b>35 Foot</b>
3" diameter	98500330	98500335
4" diameter	98500430	98500435
5" diameter	98500530	98500535
5.5" diameter	985005530	985005535
6" diameter	98500630	98500635
7" diameter	98500730	98500735
8" diameter	98500830	98500835

**Stainless Steel Flex S-Kit (Type 316L)**

Size	Order #
6" x 5'	98530605BS
8" x 5'	98530805BS

Note: Bottom Damper Sealing Kits

Kit includes:  
 SS Flexible Liner, Termination  
 Cap, 16" x 16" Top Plate, Universal  
 Connector



Kit Includes:  
 Ovalized Flex Liner, Insulation  
 Blanket, Universal Connector,  
 Bottom Damper



Kit includes:  
 SS Flexible Liner, Termination Cap,  
 16" x 16" Top Plate, Two-Piece Flex  
 Tee, Flex Tee Cap

**Stainless Steel Two-Piece Flex Tee Kit (Type 316L)**

Size	Order #	Order #
	<b>15 Foot</b>	<b>18 Foot</b>
3" diameter	98510315	98510318
4" diameter	98510415	98510418
5" diameter	98510515	98510518
5.5" diameter	985105515	985105518
6" diameter	98510615	98510618
7" diameter	98510715	98510718
8" diameter	98510815	98510818
	<b>20 Foot</b>	<b>25 Foot</b>
3" diameter	98510320	98510325
4" diameter	98510420	98510425
5" diameter	98510520	98510525
5.5" diameter	985105520	985105525
6" diameter	98510620	98510625
7" diameter	98510720	98510725
8" diameter	98510820	98510825
	<b>30 Foot</b>	<b>35 Foot</b>
3" diameter	98510330	98510335
4" diameter	98510430	98510435
5" diameter	98510530	98510535
5.5" diameter	985105530	985105535
6" diameter	98510630	98510635
7" diameter	98510730	98510735
8" diameter	98510830	98510835



**Stainless Steel Flex Pellet Kit (Type 316L)**

	25 Foot	35 Foot
Size	Order #	Order #
3" diameter	98520325	98520335
4" diameter	98520425	98520435
4"/3" diameter*	98524325	98524335

**Light Round Flexible Stainless Steel Liner (Type 316L)**

	25 Foot Length	35 Foot Length	Per Foot (50' Max)
Size	Order #	Order #	Order #
3"	98010325	98010335	98010301
4"	98010425	98010435	98010401
5"	98010525	98010535	98010501
5.5"	980105525	980105535	980105501
6"	98010625	98010635	98010601
7"	98010725	98010735	98010701
8"	98010825	98010835	98010801
9"	98010925	98010935	98010901
10"	98011025	98011035	98011001
12"	98011225	98011235	98011201

**24 Gauge Flex Rain Cap (Type 316L)**

	With Mesh	Without Mesh
Size	Order #	Order #
3"	98621003	98620003
4"	98621004	98620004
5"	98621005	98620005
5.5"	986210055	986200055
6"	98621006	98620006
7"	98621007	98620007
8"	98621008	98620008
9"	98621009	98620009
10"	98621010	98620010
12"	98621012	98620012

\*4"/3" Kit sold with 4" liner and 4" tee main with 3" take off.



Note:  
Custom ovalizing available (#98990001)



Note:  
This item is available with or without mesh.



**24 Gauge Low Profile Flex Rain Cap (Type 316L)**

Size	Order #
3"	98623003
4"	98623004
5"	98623005
5.5"	986230055
6"	98623006
7"	98623007
8"	98623008
9"	98623009
10"	98623010
12"	98623012



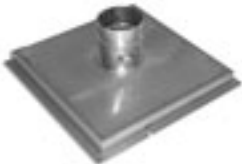
**24 Gauge/18 Gauge Stainless Steel Flex Support Plate**

Size	Gauge	Order #
9"x9"	24	986810**
9"x13"	24	986812**
13"x13"	24	986814**
13"x18"	24	986817**
16"x16"	24/18	986816**
18"x18"	24/18	986819**
24"x24"	18	986824**

Note:  
All support plates 9" and above  
will be made with 18 gauge.

6 per box

\*\*specify two digit hole size  
(6"=06 10"=10)



**Stainless Steel Support Plate with 18 Gauge Frame**

Size	Order #
9"x9"	98690909**
9"x13"	98690913**
13"x13"	98691313**
13"x18"	98691318**
16"x16"	98691616**
18"x18"	98691818**
24"x24"	98692424**

Note:  
Frame will be spot welded to the  
support plate.

\*\*specify two digit hole size  
(6"=06 10"=10)



**24 Gauge Pellet Tee (Type 316L)**

Size	Order #
3"	98540103
4"	98540104
4" / 3"	985401043

4" / 3" = 4" tee main with 3"  
take off.

**24 Gauge Two-Piece Flex Tee (Type 316L)**

Size	Order #
3"	98630103
4"	98630104
5"	98630105
5.5" with 6" Branch	986301055
6"	98630106
7"	98630107
8"	98630108
9"	98630109
10"	98630110
12"	98630112

**6" Tee Branch Extension (Adjustable Slip) - Type 316L**

Length	Order #
9"	630106165
13"	63010616516

**24 Gauge Flex Tee Cap (Type 316L)**

	Flex Tee Cap	Flex Pellet Tee Cap
Size	Order #	Order #
3"	98630203	98550203
4"	98630204	98550204
5"	98630205	-
5.5"	986302055	-
6"	98630206	-
7"	98630207	-
8"	98630208	-
9"	98630209	-
10"	98630210	-
12"	98630212	-

**24 Gauge Appliance Connectors (Type 316L)**

	Universal Connectors	Insert Appliance Connectors
Size	Order #	Order #
3"	98531003	98531003S
4"	98531004	98531004S
5"	98531005	98531005S
5.5"	985310055	985310055S
6"	98531006	98531006S
7"	98531007	98531007S
8"	98531008	98531008S
9"	98531009	98531009S
10"	98531010	98531010S
12"	98531012	98531012S



Flex Tee Cap



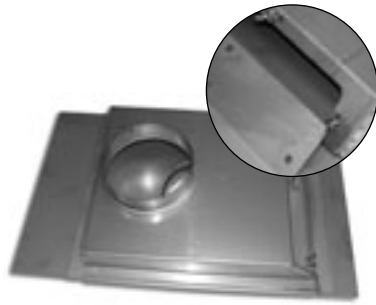
Flex Pellet Tee Cap



Note: Used to connect flex to stove or connect two pieces of flex.



Note: Connects the liner to a fire-place insert when there is a close clearance between the insert and the lintel.



Large



Small



Shoebox

Note:  
Adjustable a full 6" from front to back (on large)  
Low Profile (only 3" box height)  
Removable door for clean out access

**Stainless Steel Insert Offset Adaptor (Type 316L)**

	Large	Small	Shoebox
Size	Order #	Order #	Order #
6"	5350906	5350912156	5350916
8"	5350908	—	—

**24 Gauge 45° and 30° Flex Elbows (Type 316L)**

	45° Flex Elbow	30° Flex Elbow
Size	Order #	Order #
4"	9861450416	9861300416
5"	9861450516	9861300516
6"	9861450616	9861300616
7"	9861450716	9861300716
8"	9861450816	9861300816
9"	9861450916	9861300916
10"	9861451016	9861301016
12"	9861451216	9861301216

**24 Gauge 90° Flex Elbow (Type 316L)**

Size	Order #
4"	9861900416
5"	9861900516
6"	9861900616
7"	9861900716
8"	9861900816
9"	9861900916
10"	9861901016
12"	9861901216

**24 Gauge Flex Reducer (Type 316L)**

Size	Order #
4" x 3"	9865040316
6" x 5"	9865060516
6" x 5.5"	9865065516
7" x 6"	9865070616
8" x 6"	9865080616

